



*AutoPrint*

13 March, 2005

# Table of Contents

Foreword	0
<b>Part I Introduction, configuration and operation</b>	<b>2</b>
1 Introduction .....	2
2 Operation .....	2
3 Settings .....	4
4 Settings Details .....	6
5 EMail .....	8
6 Tiff .....	10
7 RTF .....	13
8 Txt .....	14
9 Graphics .....	14
10 HTML .....	16
11 Other .....	17
<b>Part II Other Information</b>	<b>19</b>
1 NT Service .....	19
2 Srvany & Instsrv .....	21
3 Uninstall .....	24
4 License .....	24
5 Getting in Touch with CGI / ECC .....	25
<b>Index</b>	<b>27</b>

# 1 Introduction, configuration and operation

## 1.1 Introduction

**AutoPrintPro** is a software utility that will print multiple multi-page tiff, single page tiff, rtf, bmp, jpg, gif, wmf, HTML, msg, eml & txt files to different printers. This application sits in the background and quietly prints incoming files which are then deleted or moved. It can be used in, for example, DIP or fax situations. Thousands of files can be processed daily.

You can change the settings so that several different 'collection' directories are used with different settings per directory, and also different printers for the different types of documents. You may also change the frequency which the Autoprint looks for files.

Unless you intend to print Word and Acrobat documents, Autoprint does not use OLE, or any connectivity to any other program on your pc, so you don't need, for example, Word installed.

This Auto Batch printer has a small footprint in memory and disk, this means the performance of your pc will not be affected.

AutoPrint's great for printing incoming faxes from Outlook Express or printing batches of RTF invoices from databases. Add printing support to your application simply by writing the file to a Windows disk. Add Windows print support to legacy DOS apps, even over a network. Even print from Unix/Linux via Samba - simply copy the file to the remote Windows machine, and AutoPrint will do the rest. After printing, Auto Print will either delete or move the file for you. Resize (un-squash) low resolution fax images before printing, skip odd/even/small tiff pages. Delete or move the printed files afterwards. De-skew crooked faxes before printing. All automatically!

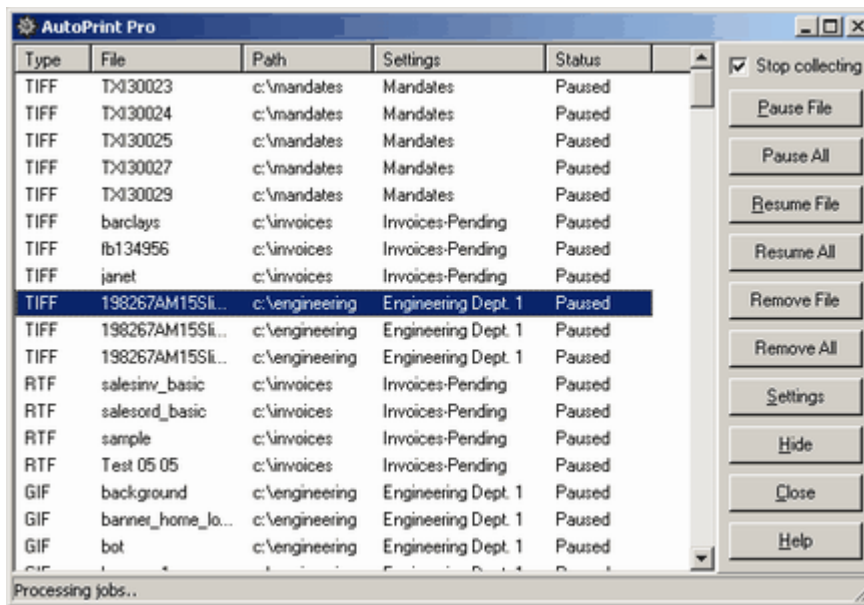
AutoPrint does not support the tiff LZW format, as this is still patented by Unisys in some countries.

[CGI Systems](#) makes other products to facilitate other stages of this type of operation, for example we make a [batch file converter for .tif files](#), and also pseudo printer drivers to allow any Windows application to print to monochrome .tif files. Most of these products integrate with our [Deliver](#) messaging product. We also make e-commerce systems and an [encryption utility](#).

## 1.2 Operation

**AutoPrintPro** will take tiff, tif, rtf, html, htm, gif, bmp, wmf, png & text files from a specified directory and print these files to the appropriate printers as specified in for that directory. Once a file is printed it will be deleted, unless you have [specified otherwise](#) in the settings.

**Main screen:**



The main part of the window lists the files that have been found by AutoPrint Pro. As they are printed they will be removed from the list. You may optionally override the automatic collecting and printing of files with the buttons to the right.

**Stop collecting** - stops AutoPrint Pro looking at the various directories specified in the settings groups.

**Pause** - pauses printing all the currently listed files (often used in conjunction with 'stop collecting')

**Pause All** - as above, but for all listed files

**Resume** - Restart printing a paused file

**Resume All** - as above, but for all listed and listed files

**Remove** - removes the selected file from disk, regardless whether it has been printed.

**Remove All** - as above, but for all listed files

**Settings** - Shows the [settings dialogs](#).

**Taskbar** - minimize AutoPrint to the taskbar.

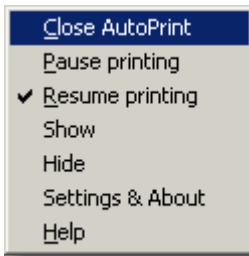
**Close** - Closes AutoPrint. Unprinted files will remain on disk, ready to be printed next time AutoPrint is run.

The main window will be displayed for a few seconds prior to AutoPrint minimizing and displaying as an icon in the system tray.



It's the small 'cog-wheel' in the picture above.

If you right-click on the cog-wheel with the mouse you will see the following menu:



These options control the operation of AutoPrint.

Pause printing - stop printing all file types from AutoPrint.

Resume printing - re-start printing all file types from AutoPrint.

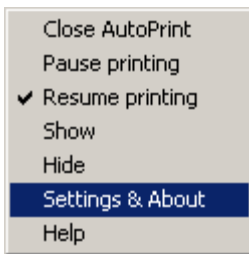
Help - online help - it's what you're reading.

[Settings & about](#). Change the way the program processes the various file types.

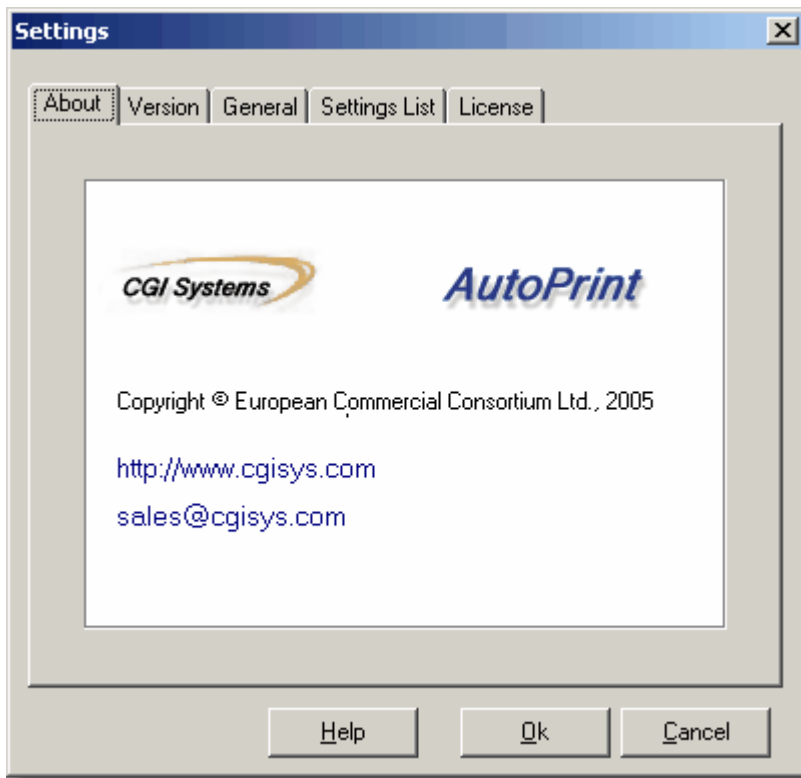
**Error handling.** If AutoPrint encounters an image file format error, it will write a message to a log file and (if specified) still copy the image file to the output directory. The log file is called 'autoprint\_errors.err' and can be found in the input directory. It will be created only if required.

## 1.3 Settings

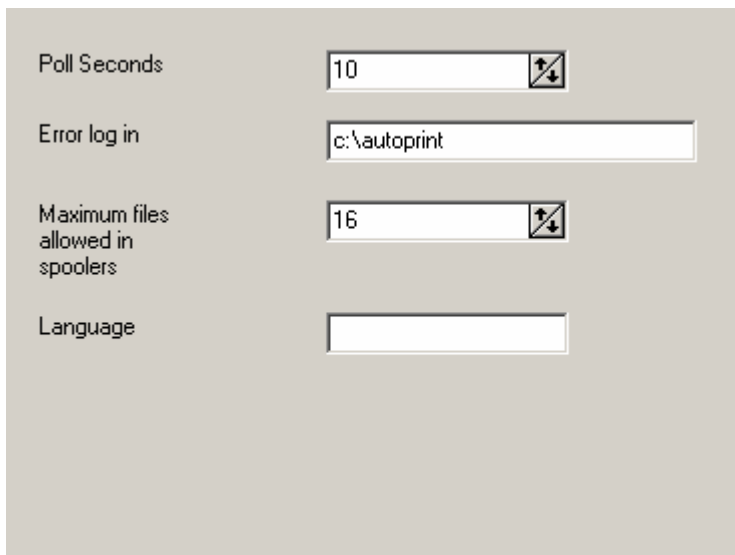
**AutoPrint** allows you to make various changes to its configuration. You may change these settings by right-clicking on the small 'cog-wheel' icon in your task-bar, at the bottom right of the screen. Then click on the 'Settings & about' menu option as displayed below:



The **Settings** dialog will appear:



The second tabbed page of this dialog relates to version information, whilst the third will display your general settings:



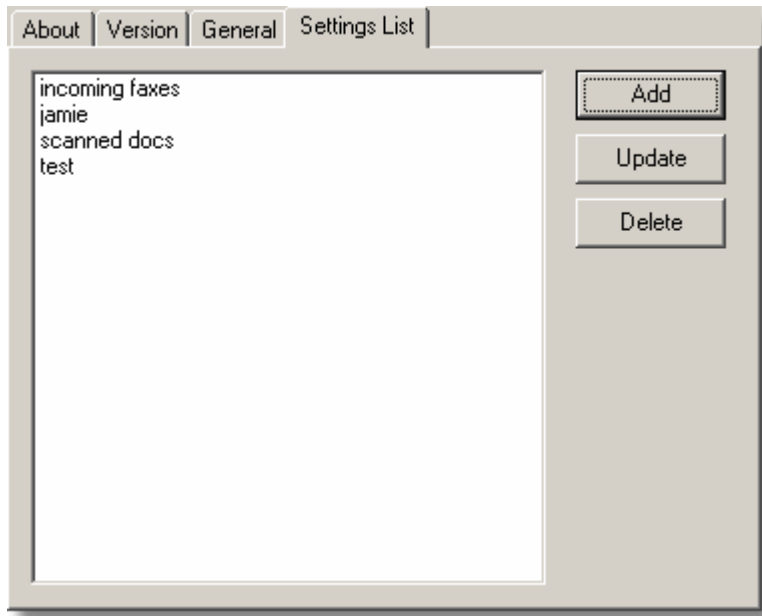
**Poll Seconds** - is the number of seconds delay between AutoPrint looking for new files in the collection folder. The default is 10, the minimum is 1 and the maximum is 2419200, this being 3 weeks.

**Error log in** - the location where AutoPrint Pro will place its error log - named 'autoprint\_errors.err', it is in fact merely a text file.

**Maximum files allowed in spoolers** - AutoPrint probes the combined printer queues of all printers on

the machine each time it is about to print. If the combined number of pending jobs is greater than 16 (you can set this in the Settings|General tab) it will stop spooling, although it will still grab documents. As the printers catch up, AutoPrint will start 'feeding' them again. In terms of total throughput, even a low value such as 4 should make no difference - AutoPrint will always be faster than the printer.

The fourth tabbed page is where you will see your settings groups:



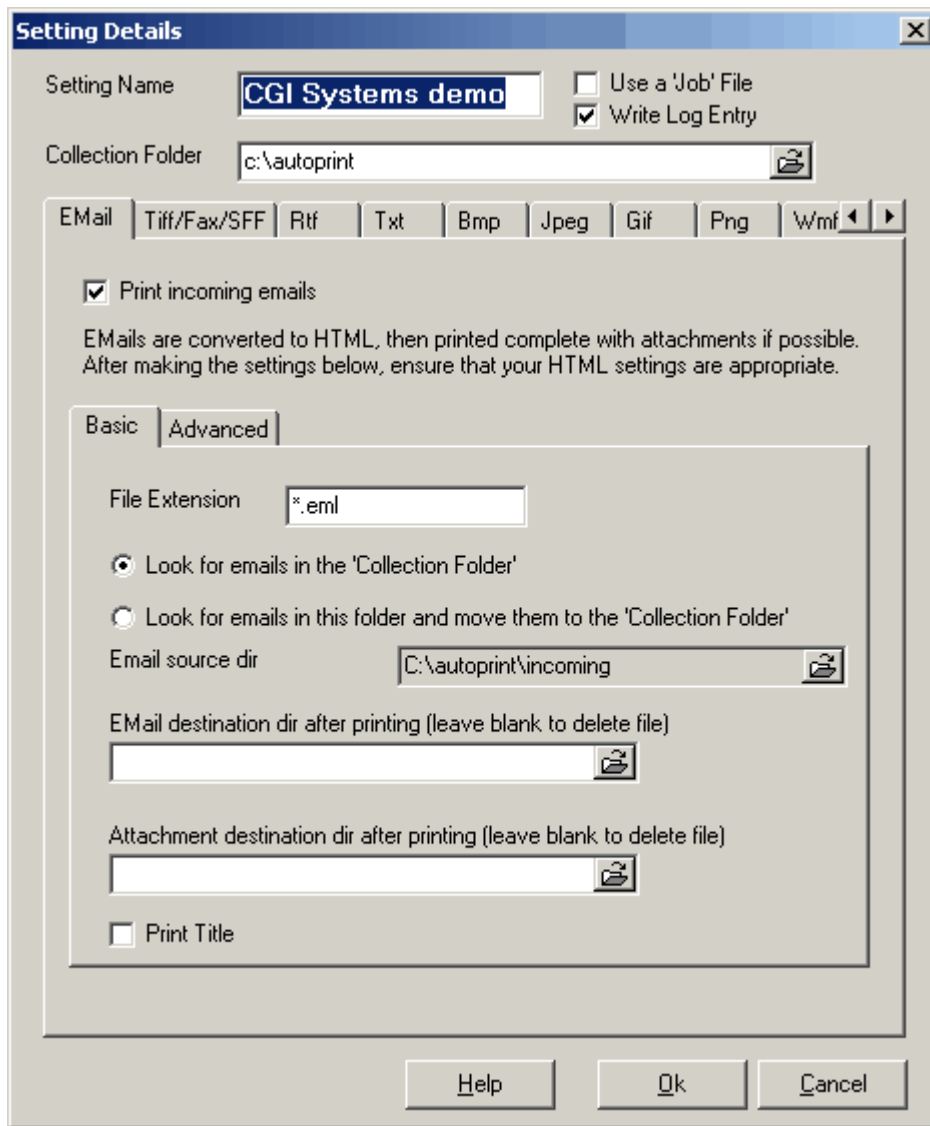
**Add** - press this to add a new group of settings. You will see the settings details dialog.

**Update** - press this to update the selected group of settings. You will see the [settings details dialog](#).

**Delete** - press this to remove the selected group of settings

## 1.4 Settings Details

This is the settings details dialog. AutoPrint Pro can maintain multiple groups of settings, each of which realtes to a directory where files are placed by third party software. You specify this directory and various print options in orer to have all these files printed automatically.



**Setting Name** - this is a unique name that you must specify in order for AutoPrint Pro to be able to reference each settings group.

**Collection Folder** - is where you will 'drop' your tiff, rtf and/or txt files. Do not specify a trailing backslash (\) at the end of the path. The path 'c:\testprint' is the default.

**Use a job file** - if checked, this allows the user to place as many files as he/she likes into the collection folder. AutoPrint will not print them until a text file with the extension '.job' is also placed there. The job file lists the files to be printed in a particular order and AutoPrint prints them and then deletes the job file. The format of the job file is simple:

```
ghi.htm
def.jpg
abc.bmp
```

The files will be printed in the order specified. You cannot include emails in the job files - the 'Print email' options and 'Use Job File' options are mutually exclusive.

**Write Log Entry** - updates a text 'log' file to each input directory as files are printed. The filename is:

*Settingname.log*

Underneath these fields is a set of tabbed pages, each of which relates to a specific type of document.

## 1.5 Email

EMails that are in the standard RFC822 format can be saved into a folder from where AutoPrintPro will process them. The processing will include extracting attachments, formatting a header into HTML format, and converting the textual message body if appropriate into HTML. Any attachment files that are of a format that AutoPrintPro can handle (tiff, jpeg, etc) will be printed using the the settings for that particular file type. If the message body is in HTML format, and it includes inline images, the images are printed with the HTML and are not printed individually.

After printing, AutoPrintPro will optionally move the attachments to an attachment folder. Again, if the message body is in HTML format, images that are part of the HTML will be copied to the HTML directory, rather than the directory specified for that format.

The screenshot shows the 'Email' configuration window in AutoPrintPro. At the top, there are tabs for different file formats: Email, Tiff/Fax/SFF, Rtf, Txt, Bmp, Jpeg, Gif, Png, and Wmf. The 'Email' tab is selected. Below the tabs, there is a checked checkbox for 'Print incoming emails'. A text box below this checkbox contains the instruction: 'EMails are converted to HTML, then printed complete with attachments if possible. After making the settings below, ensure that your HTML settings are appropriate.' Below this, there are two sub-tabs: 'Basic' and 'Advanced'. The 'Basic' tab is active. It contains several settings: 'File Extension' is set to '\*.eml'; there are two radio buttons for email source, with the first 'Look for emails in the 'Collection Folder'' selected; 'Email source dir' is set to 'C:\autoprint\incoming'; there are three empty text boxes for 'Email destination dir after printing', 'Attachment destination dir after printing', and 'Print Title' (which is unchecked).

**Print incoming emails - not separate files** - enables email printing and the fields in the email tab sheets below.

**File Extension** - typical values would be either \*.eml or \*.msg, these being the default file extension saved by Outlook Express and Outlook respectively.

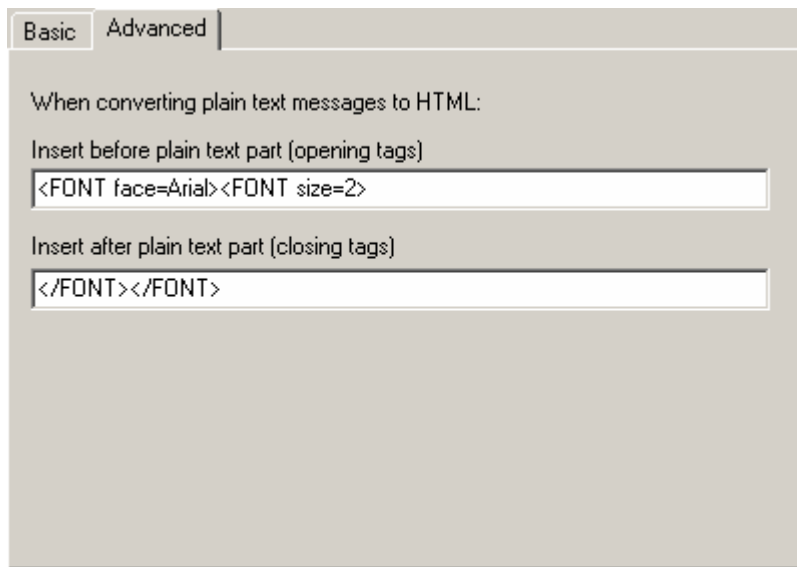
**Look for emails in the collection folder** - if selected, AutoPrint will pick up emails from the folder specified in the 'Collection folder'. Otherwise, AutoPrintPro will look for files placed into the 'Email source dir'.

**'Email source dir** - see above.

**Email destination dir after printing** - where to copy the emails to after printing, leave blank to delete files.

**Attachment destination dir after printing** - where to copy the attachments to after printing, leave blank to delete files.

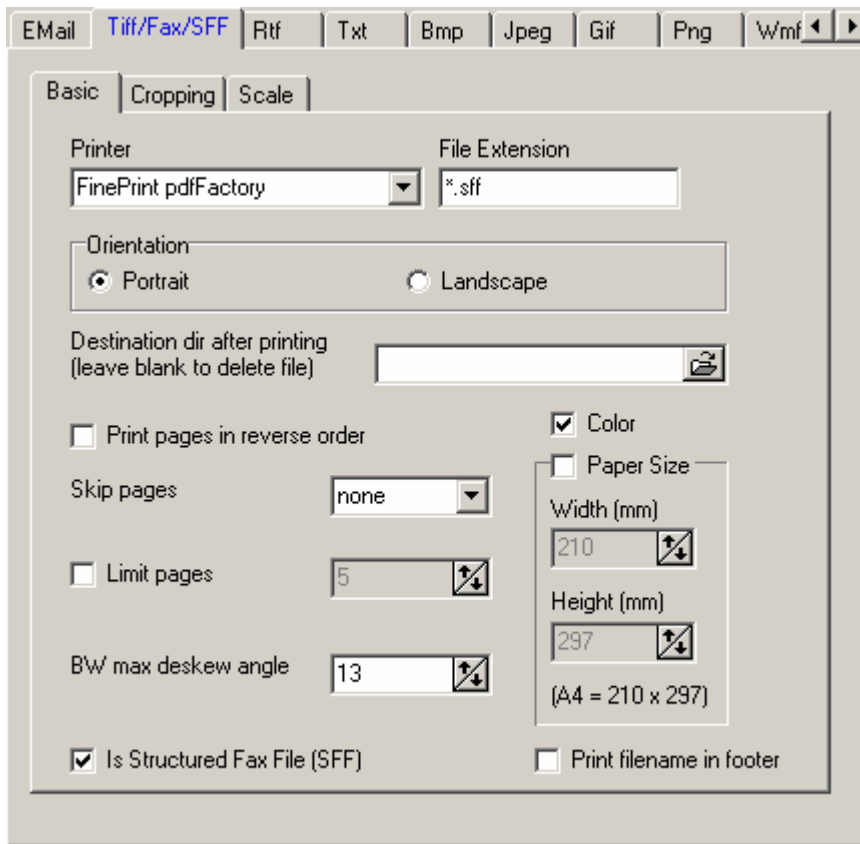
**Print Title** - The setting title will be printed at the top of the file if this is checked



**Insert before plain text part (opening tags)** - HTML snippet to set font size etc. Example: <FONT face=Arial><FONT size=2>

**Insert after plain text part (closing tags)** - HTML snippet to close tags set above. Example: </FONT></FONT>

## 1.6 Tiff



**Printer** is the printer with which you want to print tagged image format (tiff) files. The default is 'default', which will print to your default printer, irrespective of its real name.

**File Extension** - default is \*.tif, but you may change this if you have other files with extensions whose contents is tiff data. It is important that you specify the extension with its wildcard (ie \*.tif, not just tif).

**Orientation** - this will over-ride the printer's default orientation settings

**destination dir.** An optional folder to which you may want to move the printed tiff file/s. Leave it blank for the file/s to be deleted. This is the default. If the file move fails, then the file will be deleted. If you print two files of the same name over a period of time then the newer file will overwrite the older.

**TIFF - fix fax resolution.** Especially useful for fax files, where low resolution files will print in half the expected page height. The default is 'off'. If 'on', the effect is to 'normalize' the x and y resolutions. The image is further modified if the resultant size exceeds your printer's page size.

**Print pages in reverse order.** When checked, tiff files will be printer in reverse page order.

**Skip pages.** This option allows you to optionally skip printing odd, even or short ( less than .5 inches high):

none - print all pages (setup default)

odd - skip odd pages

even - skip even pages

short - skip pages that are less than 1/2" high

**Limit pages.** This option allows you to optionally stop printing after the specified number of pages. Enable it by checking the box and entering the maximum page number.

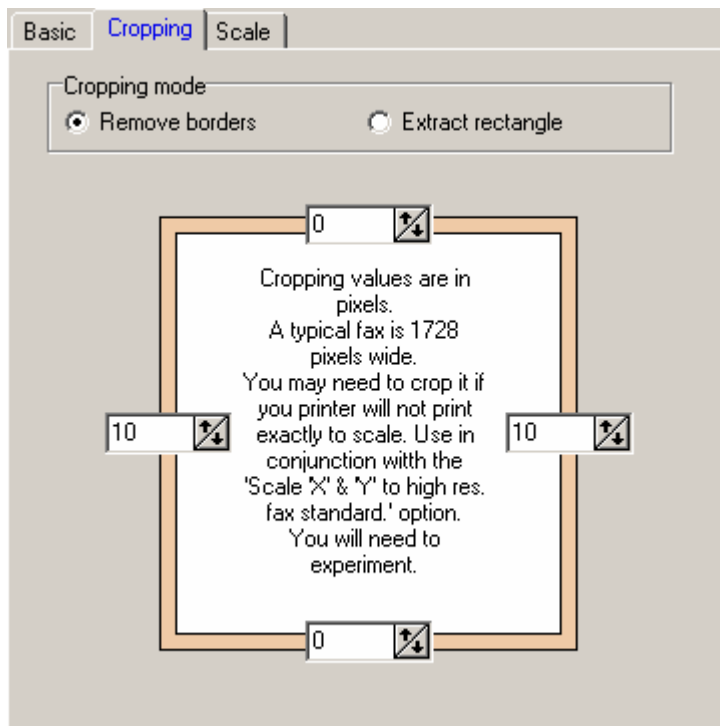
**Color** - if unchecked, the printer will print everything in black and white.

**Paper size** - over-rides the default settings for the printer, forcing these sizes in millimeters. If your printer does not support this or you wish to print on the default paper size, uncheck this box.

**BW max deskew angle** - Typically for crooked faxes, AutoPrint Pro can optionally attempt to de-skew your tiff files as they are printed. To enable this feature, enter a maximum angle in this box. A value of 0 indicates that you do wish AutoPrint Pro to attempt to deskew your faxes. If AutoPrint detects an skew within the 0 to x range (that being the value you have entered in the box), the image will be de-skewed on the fly, just before being printed. The maximum de-skew angle is 15 degrees, however, the degree of success will depend on the input image.

**Is SFF** - check this box if the input file is in this format

## Tiff Cropping



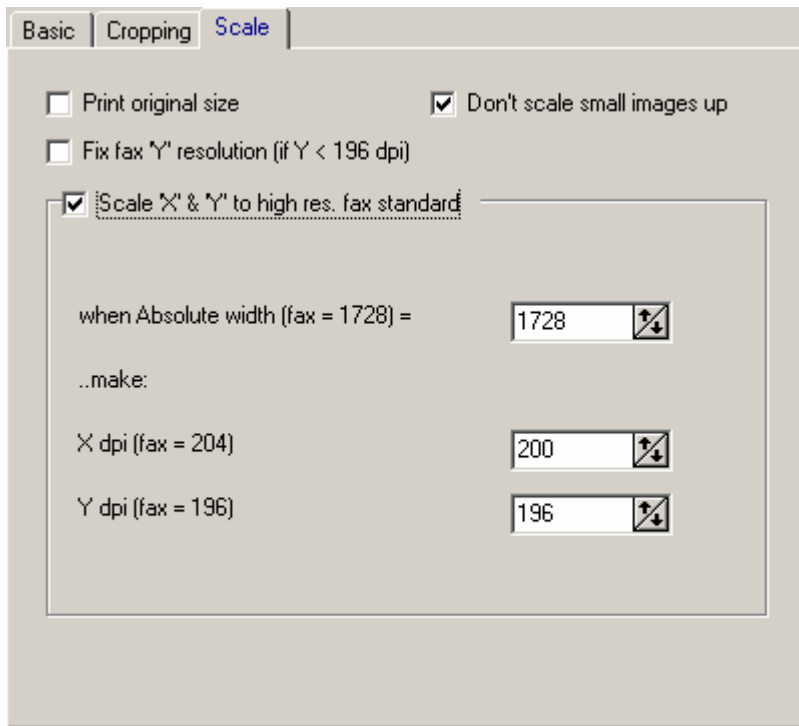
This page allows you to specify the amount of the image to remove, if needed. To leave the image untouched, specify 0 as all four parameters. The parameters are entered in pixels.

**Remove borders** - the settings you enter will remove 'n' pixels from each respective border

**Extract rectangle** - a rectangle starting from the top and left settings, and of the width & height specified by the right and bottom settings will be extracted and printed.

One of the main uses for this is to stop the printer driver re-sizing an image that is just oversize by a few pixels. This can be used in conjunction with 'Tiff scale' below to achieve correct size printouts.

## Tiff Scale



Sometimes faxes are not scaled correctly, which can lead to incorrect printouts where the image is not the same size as the original.

The correct resolution for faxes is:  
high res: 204 x 196 dpi  
low res: 204 x 98 dpi

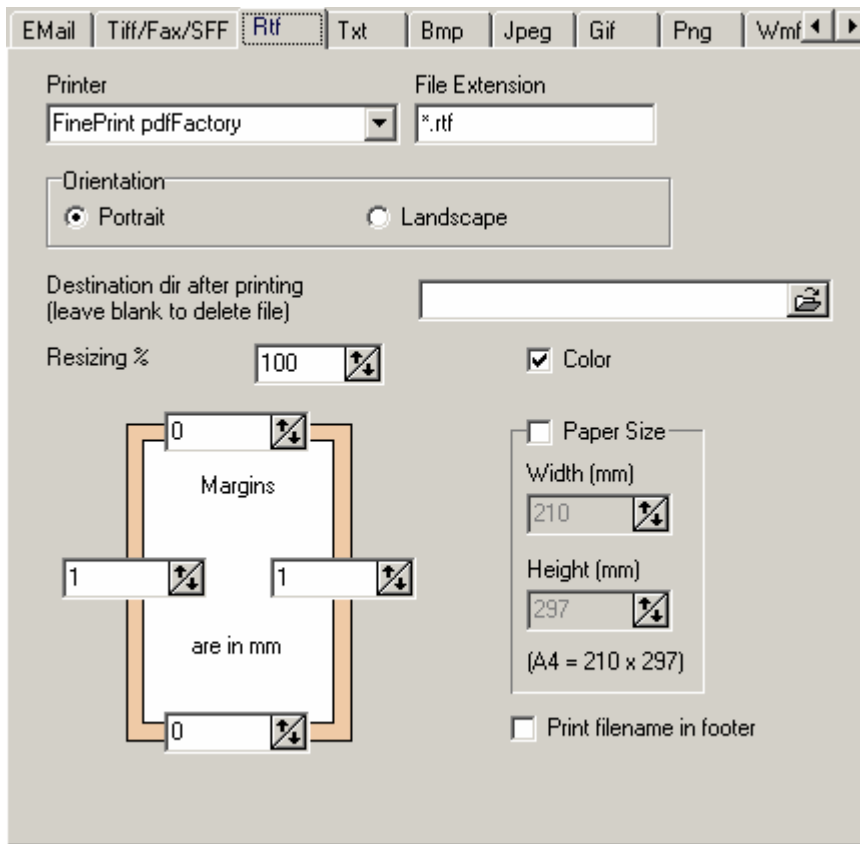
but often the fax software will create an image of 200x200 dpi.

To correct this, AutoPrintPro will allow you to rescale the image automatically. Simply enter the resolution that you require the printout to be at.  
Typical values would be 204x196, but you may need to experiment for absolute accuracy.

**Print original size** - instructs AutoPrint not to resize the image on any 'best-fit' algorithm.  
**Fix fax 'Y' resolution** - converts low resolution faxes to high resolution dimension

**Don't scale small images up** - if the image is smaller than the target page, leave it alone - useful when printing images such as business cards for proofing.

## 1.7 RTF



**Printer.** As for Tiff, but for rich text (rtf) format files.

**File Extension** - default is \*.rtf, but you may change this if you have other files with extensions whose contents is rtf data. It is important that you specify the extension with its wildcard (ie \*.rtf, not just rtf).

**Orientation** - this will over-ride the printer's default orientation settings

**Resizing.** As above, but for rich text (rtf) format files.

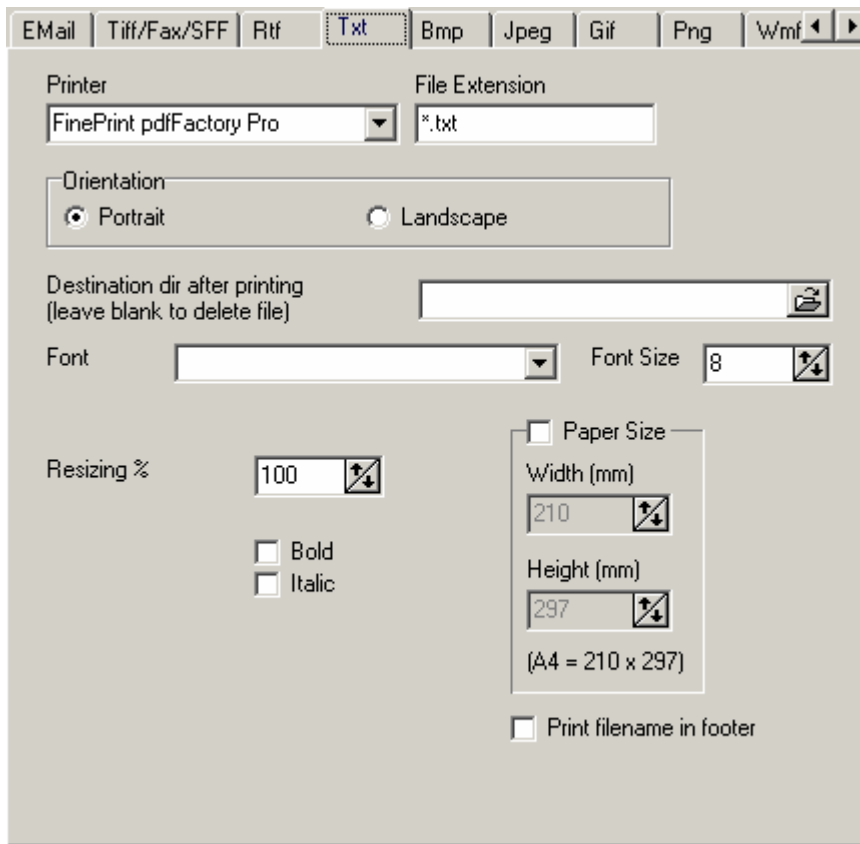
**Destination dir.** As above, but for rich text (rtf) format files.

**Color** - for Tiff, but for RTF files.

**Margins** - over-ride margin defaults by setting them here.

**Print filename in footer** - check this for this option.

## 1.8 Txt



Settings are the same as for RTF files with the following exceptions:

**Color** - this is not relevant.

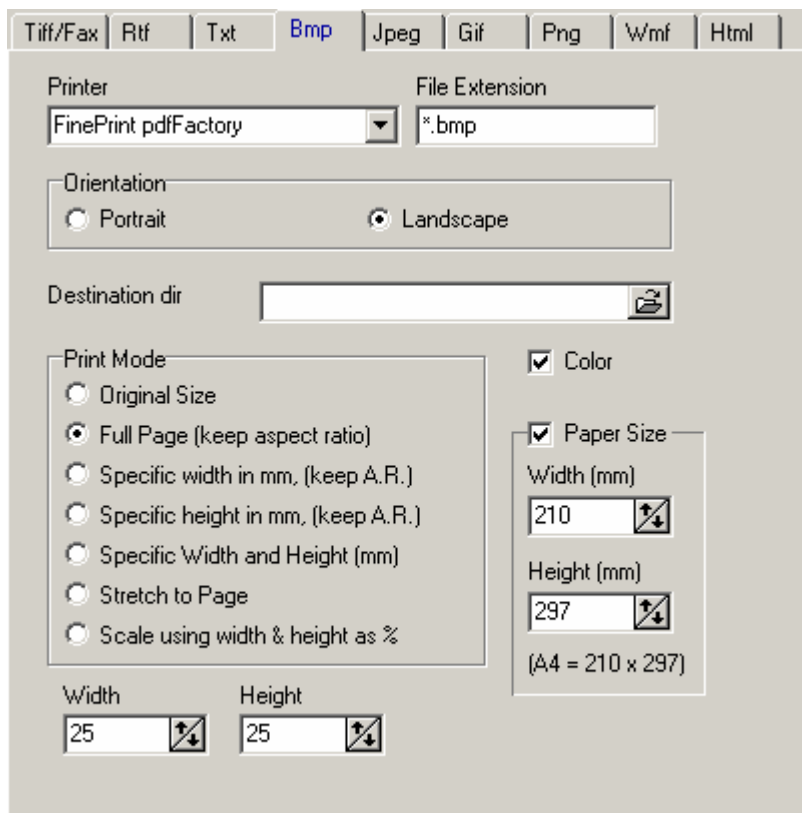
**Font** - Because text files have no embedded font attributes, you can specify the font in which the text will be printed

**Size, bold, italic** - as above

**Print filename in footer** - check this for this option.

## 1.9 Graphics

**BMP, JPEG, GIF, PNG, WMF**



**Printer.** As above, but for bitmap (bmp) or other format files.

**File Extension** - default is \*.bmp, but you may change this if you have other files with extensions whose contents is bitmap data. It is important that you specify the extension with its wildcard (ie \*.bmp, not just bmp).

Defaults for image types are:

- BMP - \*.bmp
- JPEG - \*.jpg
- GIF - \*.gif
- PNG - \*.png
- WMF - \*.wmf or \*.emf Use \*?mf for both

**Orientation** - this will over-ride the printer's default orientation settings

**Destination dir.** As above, but for rich text (rtf) format files.

**Color** - make a color printer print in monochrome.

**Print Mode** - size of scale the image if required. Options are:

- Original size
- Full Page, keeping 'aspect ratio'. The image is resized to fill the page, but width and height are also kept in proportion.
- Specific width, keeping 'aspect ratio'. The image is resized according the the **Width** field, keeping

the height in proportion.

- Specific height, keeping 'aspect ratio'. The image is resized according to the the **Height** field, keeping the width in proportion.
- Specific width and height. The image is resized according to the the **Width** and **Height** fields, ignoring proportions.
- Stretch to Page. The image is resized to fill the page, but width and height are not kept in proportion.
- Scale. The image is scaled according to the **Width** and **Height**, used as percentile values. For example, if you want to print 1/2 size, select this and enter 50 for both width and height.

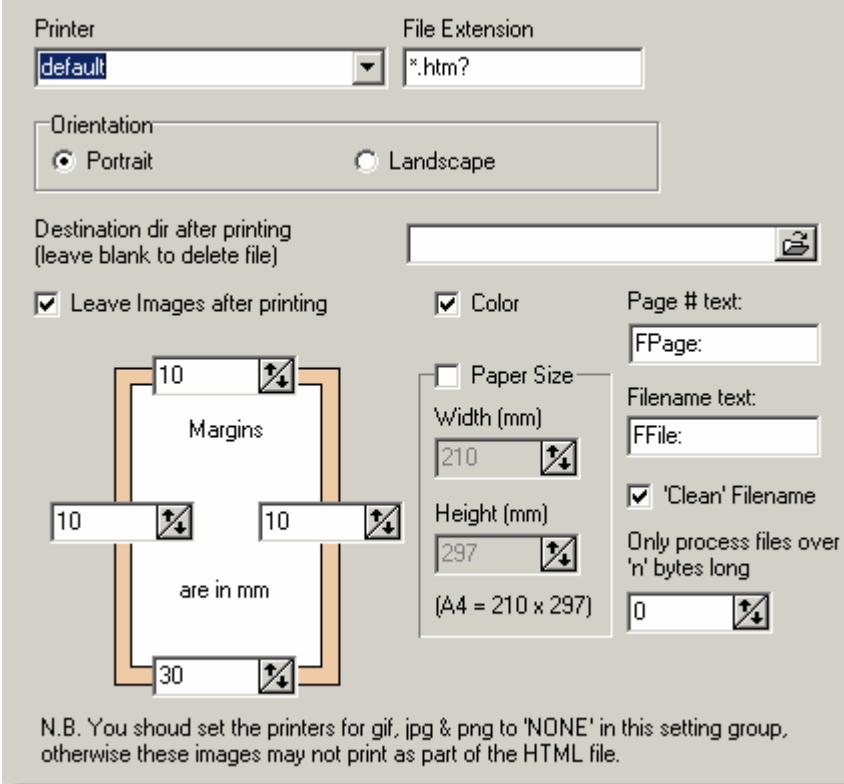
**Width** - see Print Mode above.

**Height** - see Print Mode above.

**Print filename in footer** - check this for this option.

## 1.10 HTML

Settings are as for RTF files with additional options:



Printer: default

File Extension: \*.htm?

Orientation:  Portrait  Landscape

Destination dir after printing (leave blank to delete file):

Leave Images after printing

Color

Page # text: FPage:

Paper Size

Width (mm): 210

Height (mm): 297 (A4 = 210 x 297)

Filename text: FFile:

'Clean' Filename

Only process files over 'n' bytes long: 0

Margins: 10, 10, 10, 30 (are in mm)

N.B. You should set the printers for gif, jpg & png to 'NONE' in this setting group, otherwise these images may not print as part of the HTML file.

**Page #** - if some text is set here, the page number will be printed after the text that is set. A typical value would be simply 'HPage ' (no quotes). Precede your text with either 'H' for header or 'F' for footer (no quotes) and the text will be printed in either the header or footer respectively.

**Print filename** - Print the full filename in the footer. Precede the text with either a 'H' or 'F' as above for 'Page#'.

**'Clean' filename** - Print only the short filename (no path).

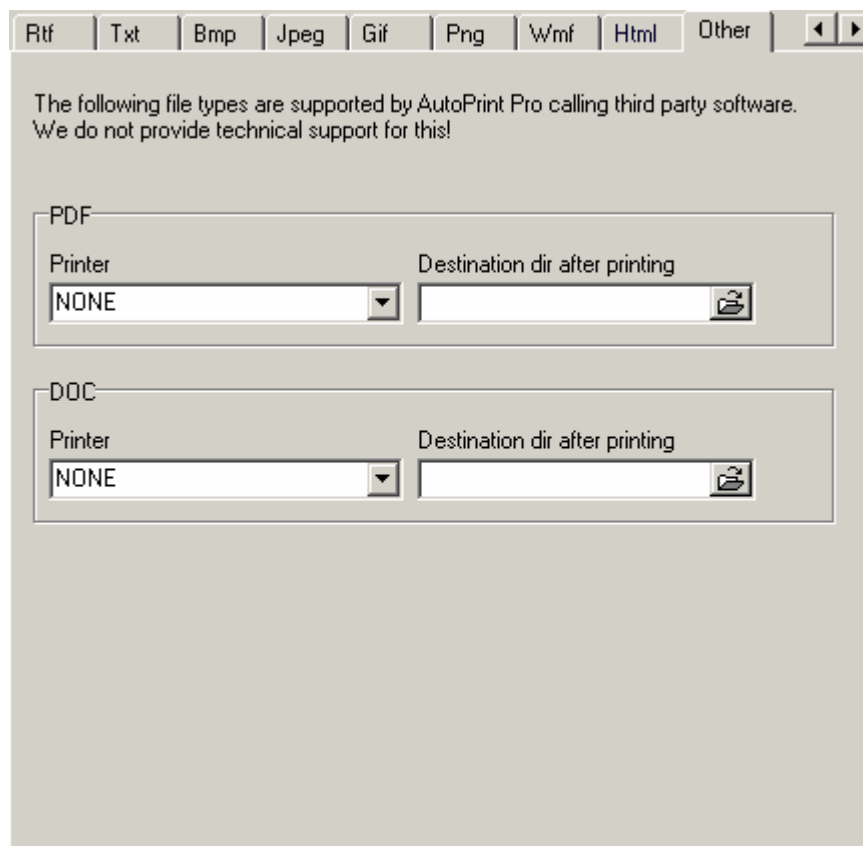
**Only process files over 'n' bytes long** - stops printing short HTML files.

Supports the following HTML features:

- Images
- Left and right floating images
- Tables
- Forms
- Background colors and images
- Subscript and superscript text
- Large HTML files

## 1.11 Other

AutoPrint also allows you to print both PDF and Word files, although both of these types require that Acrobat Reader or Word be installed, respectively. AutoPrint uses these applications to do the actual printing, and we do not provide technical support for these file types as the printing process is mainly outside our control.

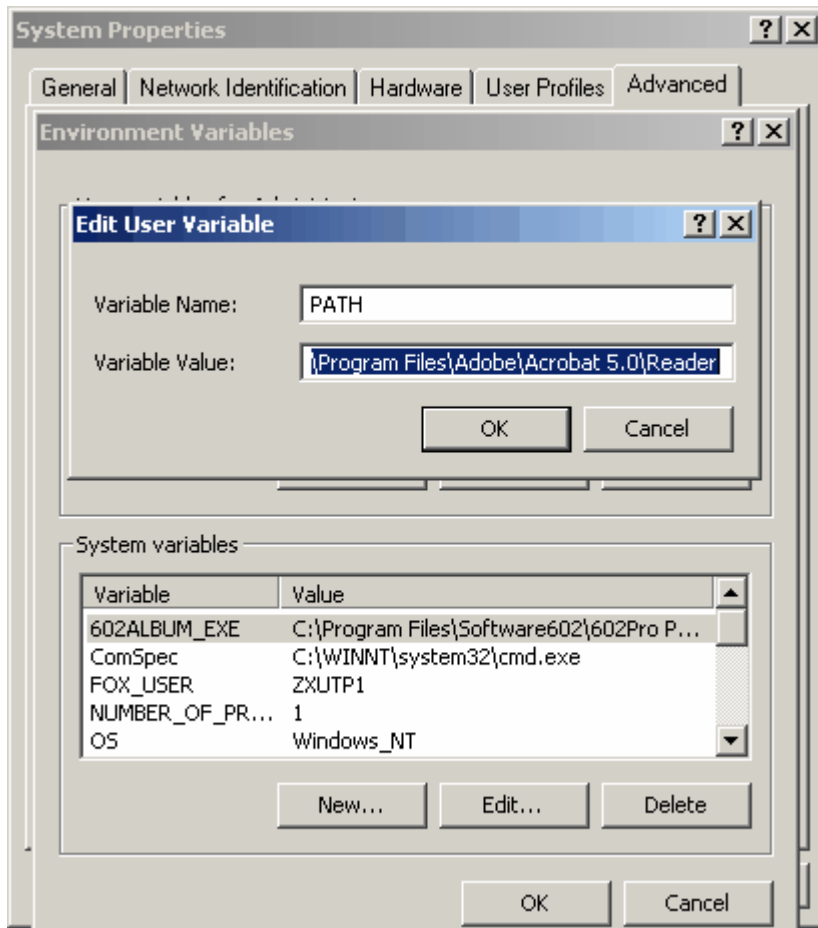


PDF Files. The PDF files can be copied to a destination directory after printing.

You need to have installed Acrobat Reader, which you may obtain from [adobe.com](http://adobe.com).

You also need to set the path so that Acrobat Reader's executable can be found. Do this as follows:

Click: Start | Settings | Control Panel | System | Advanced | Environment variables | top box | PATH



then append `c:\program files\adobe\Acrobat 5.0\Reader` (or wherever you installed acrobat reader to - make sure the path is correct for the version of Acrobat that you have installed). Use a semi-colon as separator. Remember to add this after the existing path!

Without these paths set AutoPrint will not be able to find Acrobat Reader and it will not work.

AutoPrint expects your Reader version to be called `acord32.exe`, so you may need to change this file name as required.

Test that the path is correct by opening a DOS (command) window and typing in '`acord32.exe`' (no quotes) at the `c:\` prompt.

N.B. Close and re-open the DOS window after any changes to the path as the window reads its environment variables when it opens.

Once Acrobat Reader opens, your path is correct and you may close the window.

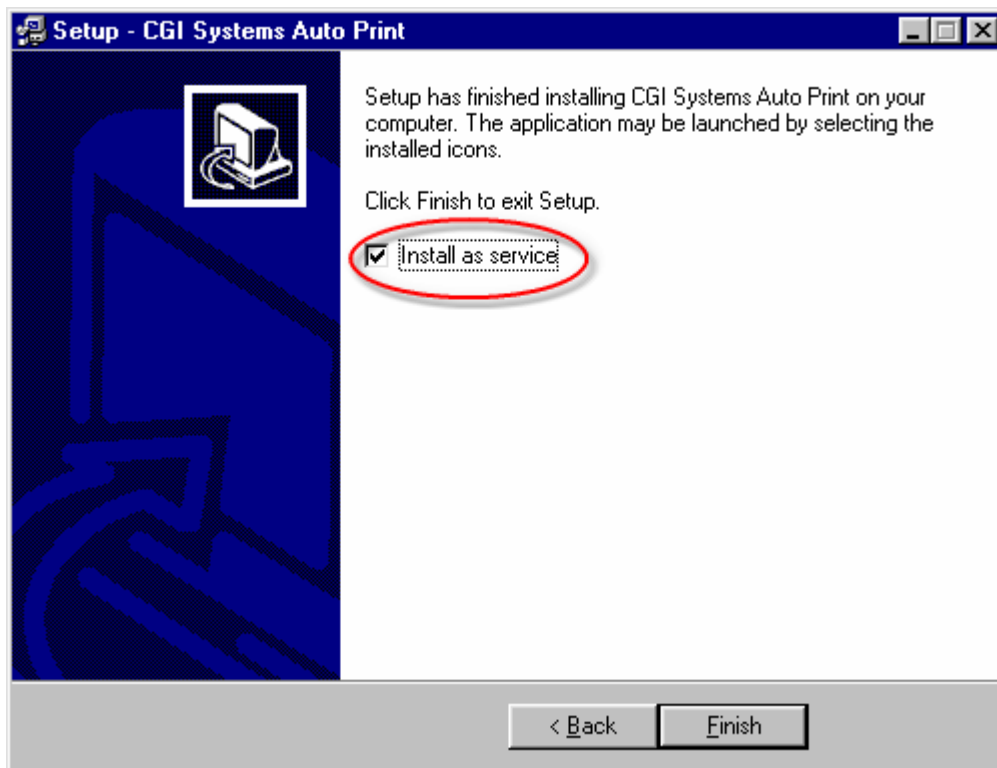
## 2 Other Information

### 2.1 NT Service

**Autoprint** can be run as a service under NT or Windows 2000. We use the supplied [instsrv.exe](#) to register [srvany.exe](#). Then [srvany.exe](#) runs [AutoPrint.exe](#). To operate AutoPrint as a service, it is essential that you run the install as 'Administrator'

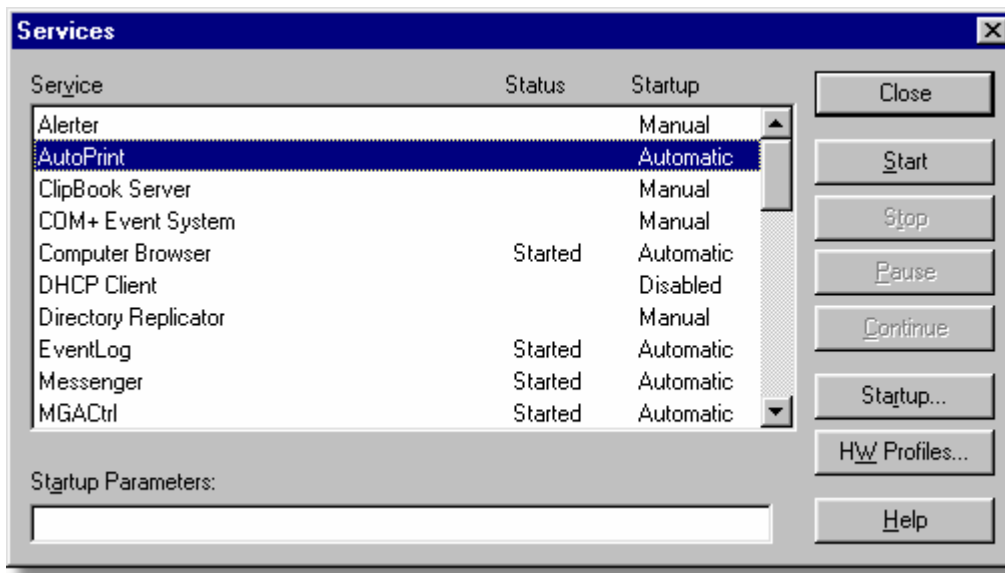
Any settings that you need to make should be made when AutoPrint is not running as service. They should be made by stopping the service and running AutoPrint from your Start menu. For more information, click [here](#). Once you have made and tested them, close AutoPrint and re-start it as a service.

As you install AutoPrint, ensure that you select the 'Install as service' checkbox in the latter stages of the install:

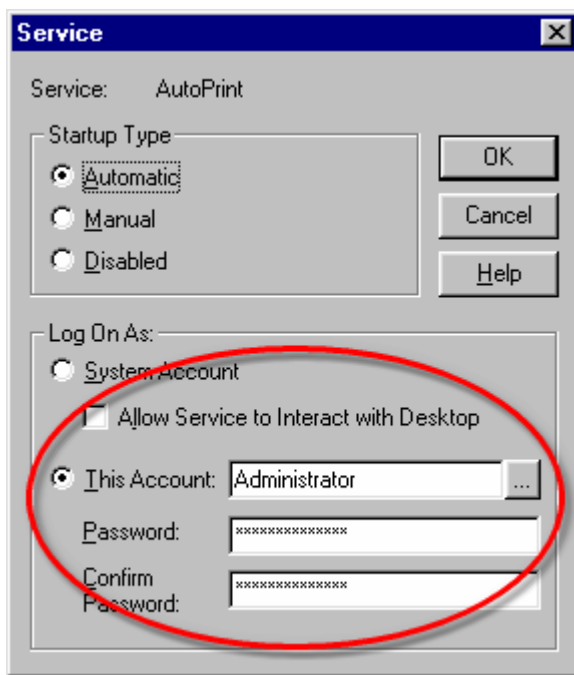


**It is required that you change the account that AutoPrint service uses to one that can access your printers. In testing, we use the admin account.**

Under **NT**, Click Start|Settings|Control Panel  
Double click Services:



Double click AutoPrint from the list and change 'This account' to one that has required access rights. If you don't, then you'll see errors as the 'System Account' cannot access network printers etc.



A very similar process is used in Windows 2000.

You should stop the service before uninstalling the program.

Specific registry settings that are made are:

```
"HKLM\SYSTEM\CurrentControlSet\Services\AutoPrint"  
ValueName: "AutoPrint"  
Value: ""  
ValueName: "AutoPrintStartName"  
Value: "Administrator"
```

```
ValueName: ImagePath
ValueData: "{app}\srvany.exe"

"HKLM\SYSTEM\CurrentControlSet\Services\AutoPrint\Parameters"
ValueType: string
ValueName: Application
ValueData: "{app}\AutoPrint.exe"
```

where {app} is the path to the AutoPrint application

and the normal AutoPrint settings are in

```
"HKLM\SYSTEM\CGISYS\AutoPrint\Parameters"
```

---

N.B. Running AutoPrint as a service is an optional feature. It is neither required that you do so, nor is it fully supported by our tech. support dept.

## 2.2 Srvany & Instsrv

Below is some technical documentation regarding the Microsoft software utilities that we use to allow AutoPrint to run as a service.

If you use our install and follow the instructions relating to user accounts [here](#), you should not have to read it.

This is not our documentation - we merely supply it as a courtesy:

This file describes the **SRVANY.EXE** utility. This utility allows running **Windows NT™** applications as services. The benefits include:

- allow apps to survive logoff/logon sequences, hence saving the overhead of re-starting them for each new user
- allow server apps to come-up and service requests even when no user is logged-on
- allow apps to run and perform a task in a specific logon account, different from the currently logged-on user

### NOTICES:

1. Some applications may terminate upon logoff, even though they were started as a service, if they don't ignore the WM\_ENDSESSION message (or CTRL\_LOGOFF\_EVENT). See "Programming Considerations" below for more details.
2. When using **SRVANY.EXE** with **Presentation Manager®** applications, special configuration instructions apply - please read the README.WRI file shipped on Disk#1 of the **Windows NT™ Add-On Subsystem for Presentation Manager®, version 3.51** (a Microsoft add-on product which allows running 16-bit **Presentation Manager®** 1.x applications in addition to the OS/2 character-mode applications supported by the **Windows NT™ OS/2 Subsystem**).

### Installation:

- > Copy SRVANY.EXE to your system and install it as a **Windows NT™** service, for example:  
INSTSRV MyService c:\tools\srvany.exe
- > configure via the Services applet ("Startup..." dialog) of the Control Panel as manual or automatic, as appropriate.
- > set via the Services applet ("Startup..." dialog) of the Control Panel the account for the service. If you need access to the screen & keyboard, you must choose the LocalSystem account and click the "Allow Service to Interact with Desktop", otherwise choose any account and specify the correct logon password. Note that the LocalSystem account doesn't have network access.

### **Specifying the application to start & its parameters:**

Run the Registry Editor (REGEDT32.EXE):

-> under HKEY\_LOCAL\_MACHINE\SYSTEM\CurrentControlSet\Services\MyService: create a 'Parameters' key

-> under the above key, create an 'Application' value of type REG\_SZ and specify there the full path of your app executable (including the extension). For example:

Application: REG\_SZ: D:\TOOLS\VI.EXE

-> OPTIONAL: under the above key, create an 'AppParameters' value of type REG\_SZ and specify the parameters for your app. For Example:

AppParameters: REG\_SZ: C:\TMP\FOO

-> OPTIONAL: under the above key, create an 'AppDirectory' value of type REG\_SZ and specify the current directory to use for the app, eg:

AppDirectory: REG\_SZ: C:\TMP

The case of all above strings is not important.

There is also another way to specify the service parameters, via the Control Panel. Note that this method applies only to the case where the service is configured to be started manually (i.e. not when it is started automatically with the system):

2. Via the Control Panel, Services applet:

-> type in the Startup Parameters box the full command-line, incl. the app name. Example:

D:\BINP\B.EXE C:\TMP\FOO

(note the '\ ' is needed to result in '\')

-> if you want to specify the current working directory, use the '/D' switch before the app name, eg:

/D C:\TMP D:\TOOLS\VI.EXE C:\TMP\FOO

**NOTICE:** Specifying the target application via the Control Panel is usually inconvenient because the parameters have to be typed every time the service is started. However, this may be convenient in cases where the target application is different every time the service is started.

### **Starting & stopping the service:**

#### Start:

If the service is configured as 'Automatic', the user doesn't need to start it explicitly: it is started automatically every time when the system is re-booted.

For 'manual' services, the user may start services in several ways:

- from the Services applet of the Control Panel
- or
- using the SC.EXE utility, eg: SC start MyService
- or
- NET START MyService

#### Stop:

When you stop the service, it will terminate the application it had started. The way to stop the service is (as described above for starting):

- from the Services applet of the Control Panel
- or
- using the SC.EXE utility, eg: SC stop MyService
- or
- NET STOP MyService

#### **WARNING:**

When the service is stopped, it terminates the application via the WIN32 TerminateProcess() API: this is a drastic way to end an application. For example, it would not allow the application to prompt the user to save changes. Therefore, it is recommended to close the application BEFORE stopping the

service.

### **De-installation:**

If you want to prevent an instance of the SRVANY utility from running until further notice, you should configure it via the Services applet ("Startup..." dialog) of the Control Panel as 'Disabled' (rather than 'manual' or 'automatic').

If you want to remove an instance of the SRVANY utility permanently:

-> If the service is running, stop it (see "Starting and stopping the service" above)

-> Run:

```
INSTSRV MyService remove
```

**NOTICE:** this procedure removes only one specific instance of SRVANY. Therefore, it is possible that SRVANY.EXE is still being used to start other applications as services.

### **Programming Considerations:**

For WIN32 graphical applications: when the currently logged-in user is logging-off, all WIN32 top-level windows receive WM\_QUERYENDSESSION and WM\_ENDSESSION messages. Some WIN32 applications choose to terminate upon receipt of such messages. In order for your WIN32 application to survive logoff, it must not do that: instead, your windows procedure should call the default windows procedure on these messages.

For WIN32 Console (i.e. character-mode) applications: when the currently logged-in user is logging-off, all Console applications receive a CTRL\_LOGOFF\_EVENT event from the Console.

If your Console application has registered a Console event handler (via SetConsoleCtrlHandler), it must ignore CTRL\_LOGOFF\_EVENT in order to survive the logoff.

### **Comments/limitations:**

-> You may install SRVANY.EXE several times with different registry parameters (i.e. running different target applications) - just use a distinct service name for each instance (e.g. MyService1, MyService2 etc.)

-> If SRVANY.EXE fails to start your application, try specifying as current directory the directory where your application is installed (see 'AppDirectory' registry key or '/D' above). SRVANY.EXE may be running under an account different than the currently logged-on user therefore environment variables may be set differently: as a result, for example, the system might have been unable to find a DLL required for your application and running it from the application's directory might help.

-> Due to a restriction enforced by **Windows NT™** on services, the application can either be interactive (have a Console, read keyboard input etc.) or have network access (not both at the same time).

This limitation is less problematic than it would appear at first glance. Here is why:

If you know which servers your interactive service application needs to access, it is possible to configure these servers (or selected shares on them) to allow your service (running under the LocalSystem account) to access these servers.

a. To allow LocalSystem services on any machine in the domain to access a specific share on a server, use the Registry Editor to add the name of that share to:

```
HKEY_LOCAL_MACHINE\SYSTEM\CurrentControlSet\Services\LanmanServer\Parameters\NullSessionShares
```

If named pipes on that server also need to be accessed by LocalSystem services, add them to:

```
HKEY_LOCAL_MACHINE\SYSTEM\CurrentControlSet\Services\LanmanServer\Parameters\N
```

ullSessionPipes

b.To allow ALL shares & pipes on the server to be accessed by LocalSystem services, add a value:

HKEY\_LOCAL\_MACHINE\SYSTEM\CurrentControlSet\Services\LanmanServer\Parameters\RestrictNullSessAccess, type DWORD, set to value 0

**WARNING:** method b) effectively allows everyone in the domain to access that server - make sure this is acceptable for you.

## 2.3 Uninstall

Before uninstalling, ensure that both **help** and **application** are closed.

Once you have done so (our example is based on NT):

1. Choose Start|Settings|Control Panel.
2. Double Click on 'Add/Remove Programs'.
3. Select AutoPrint.
4. Press the 'Add/Remove button.

NT & Win2k service operation only:

If you are running Autoprint as an NT service you should stop the service before uninstallation.

If you really have problems removing the AutoPrint service, run the following from a command prompt, open in a directory where instsrv.exe is located:

```
instsrv AutoPrint remove
```

(paradoxically, you may have to re-install AutoPrint if your uninstall failed)

## 2.4 License

European Commercial Consortium Ltd. (ECC Ltd.)  
ELECTRONIC END USER LICENSE AGREEMENT

FOR THE 'AutoPrint Pro' APPLICATION

NOTICE TO USER:

THIS IS A CONTRACT. BY INSTALLING THIS SOFTWARE YOU ACCEPT ALL THE TERMS AND CONDITIONS OF THIS AGREEMENT.

This End User License Agreement accompanies the AutoPrint batch printer product and related explanatory materials ("Software"). The term "Software" also shall include any upgrades, modified versions or updates of the Software licensed to you by ECC Ltd.. Please read this Agreement carefully. At the end, you will be asked to accept this agreement and continue to install or, if you do not wish to accept this Agreement, to decline this agreement, in which case you will not be able to use the Software.

Upon your acceptance of this Agreement, ECC Ltd. grants to you a nonexclusive license to use the Software, provided that you agree to the following:

1. Use of the Software.

- You may install the Software on a hard disk or other storage device; install and use the

Software on a file server for use on a network for the purposes of (i) permanent installation onto hard disks or other storage devices or (ii) use of the Software over such network; and make backup copies of the Software.

- You may not make and distribute any copies of the Software other than for your own use.

2. Copyright and Trademark Rights. The Software is owned by European Commercial Consortium Ltd., and its structure, organization and code are the valuable trade secrets of ECC Ltd.. The Software also is protected by United Kingdom Copyright Law and International Treaty provisions. You may use trademarks only insofar as required to comply with Section 1 of this Agreement and to identify printed output produced by the Software, in accordance with accepted trademark practice, including identification of trademark owner's name. Such use of any trademark does not give you any rights of ownership in that trademark. Except as stated above, this Agreement does not grant you any intellectual property rights in the Software.

3. Restrictions. You agree not to modify, adapt, translate, reverse engineer, decompile, disassemble or otherwise attempt to discover the source code of the Software.

4. No Warranty. The Software is being delivered to you AS IS and ECC Ltd. make no warranty as to its use or performance. ECC Ltd. AND ITS SUPPLIERS DO NOT AND CANNOT WARRANT THE PERFORMANCE OR RESULTS YOU MAY OBTAIN BY USING THE SOFTWARE OR DOCUMENTATION. ECC Ltd. AND ITS SUPPLIERS MAKE NO WARRANTIES, EXPRESS OR IMPLIED, AS TO NONINFRINGEMENT OF THIRD PARTY RIGHTS, MERCHANTABILITY, OR FITNESS FOR ANY PARTICULAR PURPOSE. IN NO EVENT WILL ECC Ltd. or OR ITS SUPPLIERS BE LIABLE TO YOU FOR ANY CONSEQUENTIAL, INCIDENTAL OR SPECIAL DAMAGES, INCLUDING ANY LOST PROFITS OR LOST SAVINGS, EVEN IF A ECC Ltd. REPRESENTATIVE HAS BEEN ADVISED OF THE POSSIBILITY OF SUCH DAMAGES, OR FOR ANY CLAIM BY ANY THIRD PARTY. Some states or jurisdictions do not allow the exclusion or limitation of incidental, consequential or special damages, or the exclusion of implied warranties or limitations on how long an implied warranty may last, so the above limitations may not apply to you.

5. Governing Law and General Provisions. This Agreement will be governed by the laws of the United Kingdom. This Agreement will not be governed by the United Nations Convention on Contracts for the International Sale of Goods, the application of which is expressly excluded. If any part of this Agreement is found void and unenforceable, it will not affect the validity of the balance of the Agreement, which shall remain valid and enforceable according to its terms. This Agreement shall automatically terminate upon failure by you to comply with its terms. This Agreement may only be modified in writing signed by an authorized officer of ECC Ltd..

Unpublished-rights reserved under the copyright laws of the United Kingdom.  
ECC Ltd. U Dejvickeho Rybnicku 10, Praha 6, 160 00, Czech Republic

YOUR ACCEPTANCE OF THE FOREGOING AGREEMENT WAS INDICATED DURING INSTALLATION. IF YOU DO NOT AGREE TO THE TERMS OF THIS CONTRACT YOU MUST NOT CONTINUE INSTALLATION, AND MUST UNINSTALL ANY PORTIONS THAT REMAIN.

## 2.5 Getting in Touch with CGI / ECC

**Web:** [www.cgisys.com](http://www.cgisys.com)

**Sales:** [sales@cgisys.com](mailto:sales@cgisys.com)

**Support:** [support@cgisys.com](mailto:support@cgisys.com)

**Channel Islands**

European Commercial Consortium Ltd. T/A CGI Software Systems, Bonamy House,  
St. James Street, St. Peter Port, Guernsey, GY1 2NZ, Channel Islands.

# Index

## - . -

.bmp 14  
.eml 8  
.gif 14  
.msg 8  
.png 14  
.rtf 13  
.tif 10  
.tiff 10  
.txt 14  
.wmf 14

## - B -

Bitmap 14

## - C -

Contact details CGI Systems 25

## - E -

EMail printing 8

## - G -

Graphics Interchange Format 14

## - H -

here 21  
HTML Printing 16  
Hyper Text Markup Language 16

## - I -

Install as service 19

## - L -

License 24

## - O -

Operation 2

## - P -

Portable Network Graphic 14

## - R -

RFC 822 8  
Rich Format Text 13  
RTF printing 13

## - S -

Setting details 6  
Settings 4  
Settings & about 2

## - T -

Text printing 14  
Tiff printing 10

## - U -

Uninstallation 24

## - W -

Windows Metafile 14